

ACCEPTABLE ACCEPTABLE



Extremely closely shaven hair,
ideal for fit testing and seal.



Acceptable level of shaving,
will typically provide good seal.



Half face & full face:
Acceptable for fit test
Reason: Hair is not in
the sealing region



Half face & full face:
Acceptable for fit test
Reason: Hair is not in the
sealing region



Half face & full face:
Acceptable for fit test
Reason: Hair is not in the
sealing region

UNACCEPTABLE UNACCEPTABLE



Half face & full face:
Unacceptable for fit test
Reason: The "five o' clock
shadow" would fail this person



Half face & full face:
Unacceptable for fit test
Reason: Hair from moustache
is acceptable. However the
"five o' clock shadow" would
fail this person



Half face & full face:
Unacceptable for fit test
Reason: Hair is in sealing
region under the chin and on
the side of the face



Half face & full face:
Unacceptable for fit test
Reason: Hair is in sealing
region under the chin



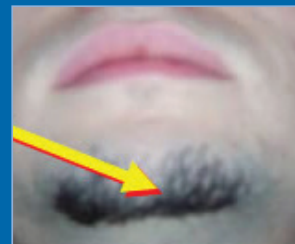
Half face & full face:
Unacceptable for fit test
Reason: Hair is in sealing
region under the chin and on
the cheeks



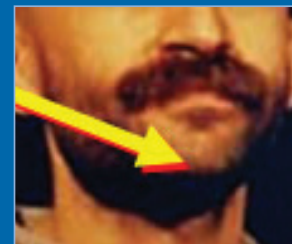
Half face & full face:
Unacceptable for fit test
Reason: Hair is in sealing
region under the chin



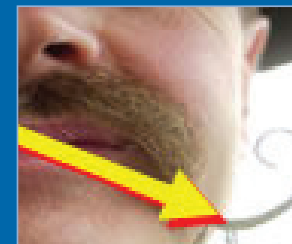
Half face & full face:
Unacceptable for fit test
Reason: Hair is in sealing
region under the chin



Half face & full face:
Unacceptable for fit test
Reason: The heavy hair in
sealing region under the chin
would prevent a good seal



Half face & full face:
Unacceptable for fit test
Reason: Hair would likely block
the sealing region or interfere
with the valves



Half face & full face:
Unacceptable for fit test
Reason: A beard of this size
would preclude any chances
of a good seal



Half face & full face:
Unacceptable for fit test
Reason: A beard of this size
would preclude any chances
of a good seal